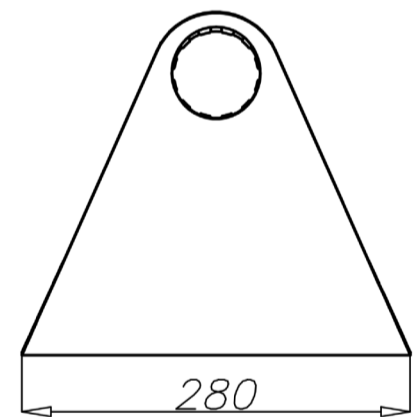
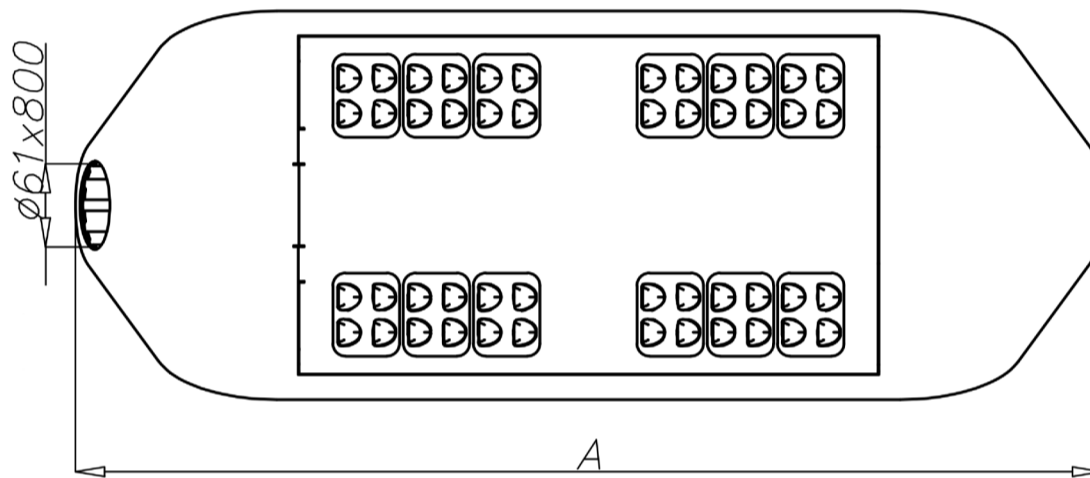




FLOAT LED



Characteristic

Ingress protection of optical system and driver	IP 66
Protection class	II
Nominal input voltage	120 - 277 V AC
Frequency	50/60 Hz
Operating temperatures	-40°C to +40°C
Material	anodized aluminium alloy
Colour	inox / black
Setup	on the extension arm; mount height 6 to 12m depending on the chosen optics configuration
Optical system	PMMA lens, replaceable LED module
LEDs type	>50 000h
LEDs lifetime L90	5 years



FLOAT LED



Technical parameters

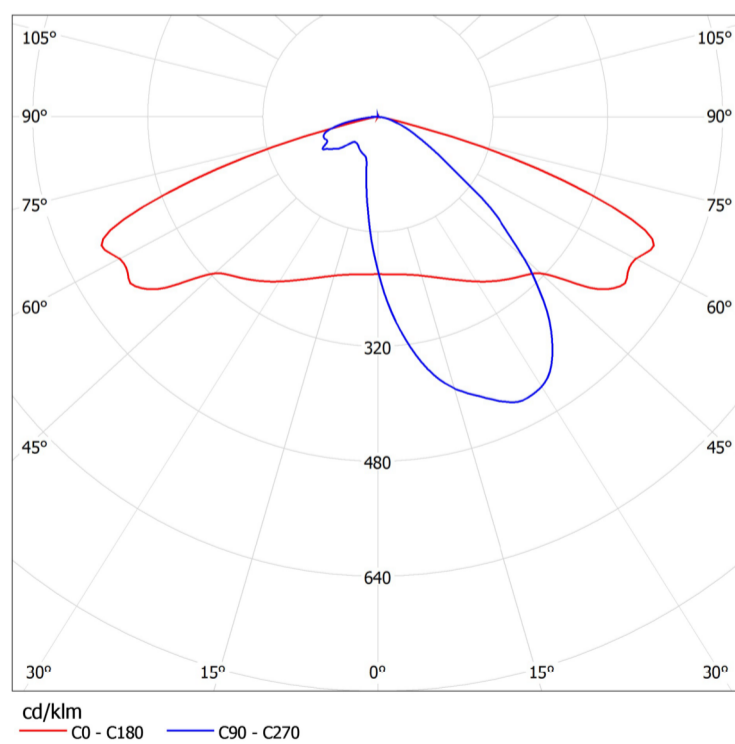
Type	FLOAT LED 48		FLOAT LED 72		FLOAT LED 96		FLOAT LED 144	
Code	222433/6/... ²⁾	222433/3/... ²⁾	222435/6/... ²⁾	222435/3/... ²⁾	222437/6/... ²⁾	222437/3/... ²⁾	222441/6/... ²⁾	222441/3/... ²⁾
Correlated colour temperature [K]	5 000	3 500	5 000	3 500	5 000	3 500	5 000	3 500
Color rendering index CRI	75 ³⁾	>80	75 ³⁾	>80	75 ³⁾	>80	75 ³⁾	>80
LEDs type	CREE XT-E		CREE XM-L2		CREE XT-E		CREE XM-L2	
LEDs quantity	24		24		48		48	
LEDs power [W]	48		72		96		144	
LEDs luminous flux ¹⁾ [lm]	5 450		10 500	8 500	10 900		20 950	17 000
Power consumption [W]	55		80		105		154	
Luminaire luminous flux ¹⁾ [lm]	5 000		9 800	7 950	10 000		19 600	15 900
Luminaire efficacy [lm/W]	91		123	99	95		127	103
Weight [kg]	8,1		8,1		9,6		9,6	
A – luminaire length [mm]	605				745			
Volume [m ³]	0,047		0,047		0,058		0,058	
Windage [m ²]	0,042		0,042		0,049		0,049	

- 1) including LEDs tolerance parameter accuracy +/- 3%
- 2) code of chosen optics configuration - example: 222433/6/T2 is a FLOAT LED 48 with optical system T2
- 3) parameter accuracy +/-2

- Low voltage directive LVD 2006/95/WE, norm PN-EN 60598-1, PN-EN 60598-2-3
- Directive EMC 2004/108/WE, norms: PN-EN 55015, PN-EN 61547, PN-EN 61000-3-2, PN-EN 61000-3-3
- Shown parameters based on measurements according to IESNA LM 79-08

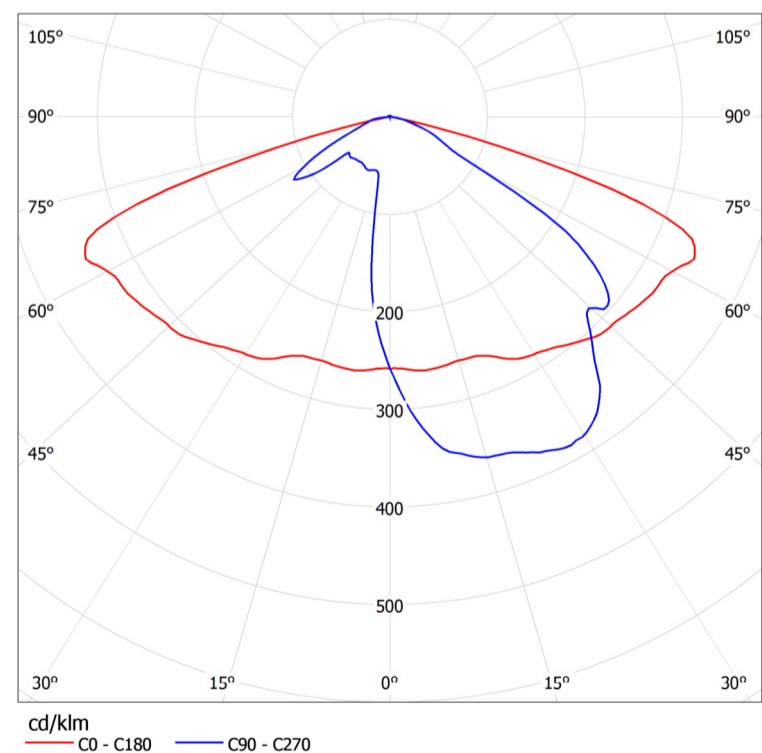
Optics configurations for FLOAT LED

T2



- ME2 lighting class
- highly effective with double configuration

T3



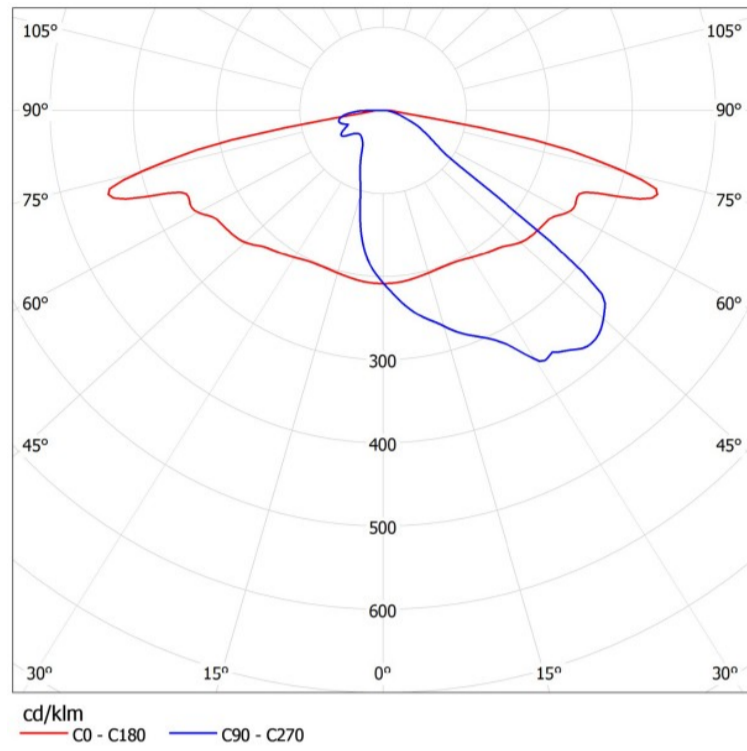
- ME3 lighting class
- mounting height up to 10m
- high longitudinal uniformity UI



FLOAT LED

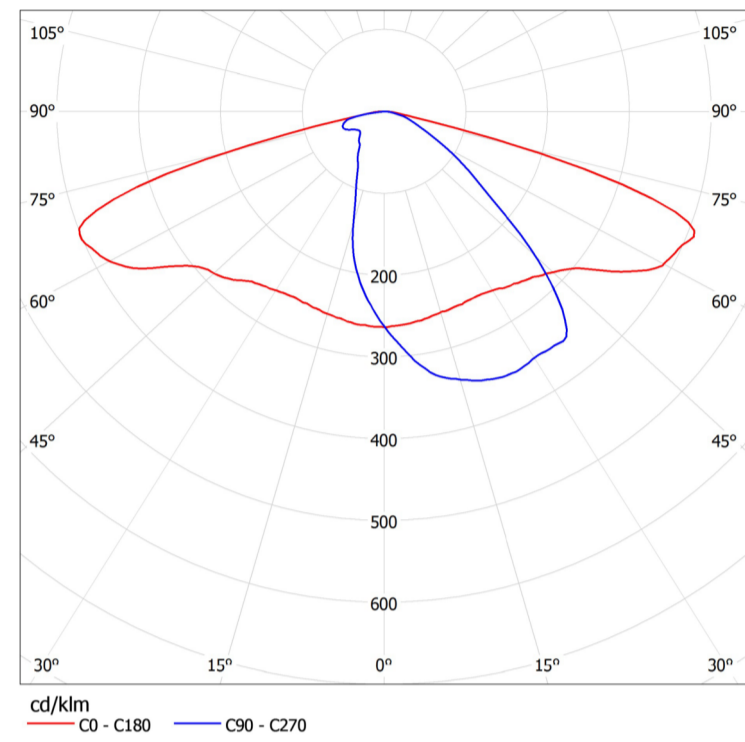


ME



- ME lighting class,
- high rate of surrounding lighting $SR > 0,6$

DW



- ME lighting class, pedestrian ways
- height up to 8m
- very high longitudinal uniformity of luminance UI